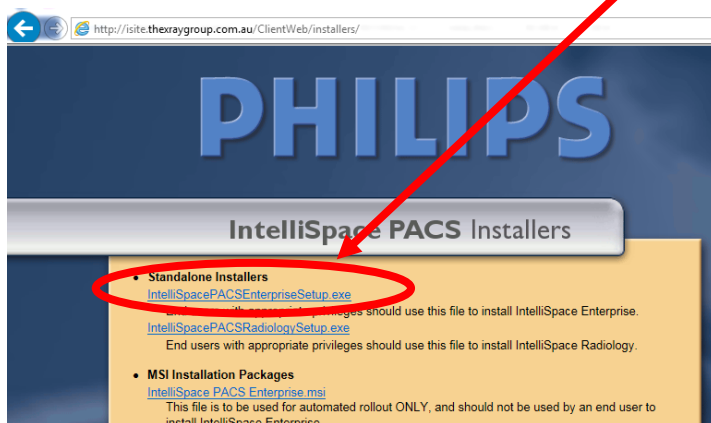


## iSite Installation Instructions

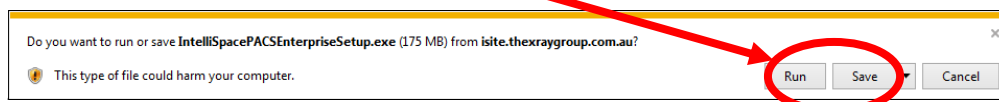
To install the new version of iSite, open your internet browser and go to:

<http://isite.thexraygroup.com.au/installers/>

Then click on “IntelliSpacePACSEnterpriseSetup.exe”



Choose the option to “Save” the file:



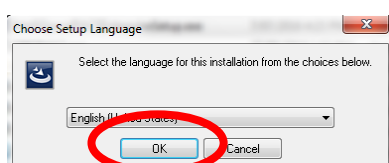
When the download has finished, click “Open or Run”:



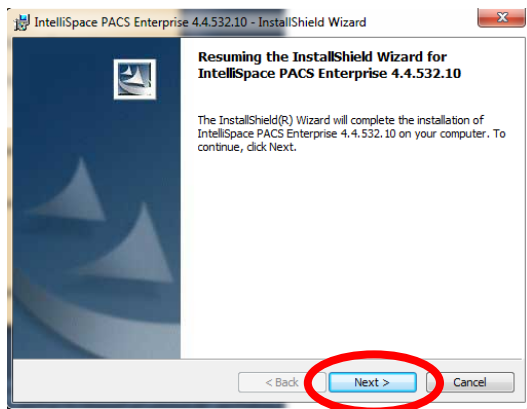
The installer will then run.

**\*\*\* Please note, you will need Administrator permissions on your computer to complete the next steps**

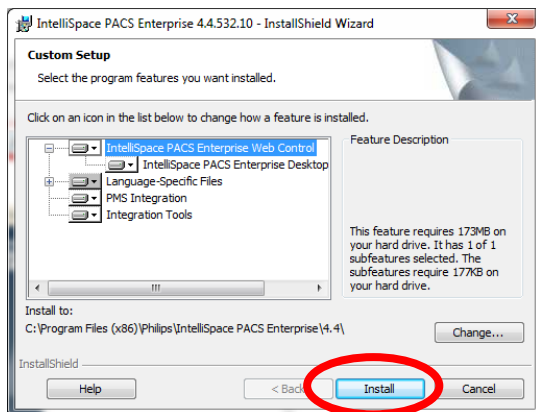
Click OK:



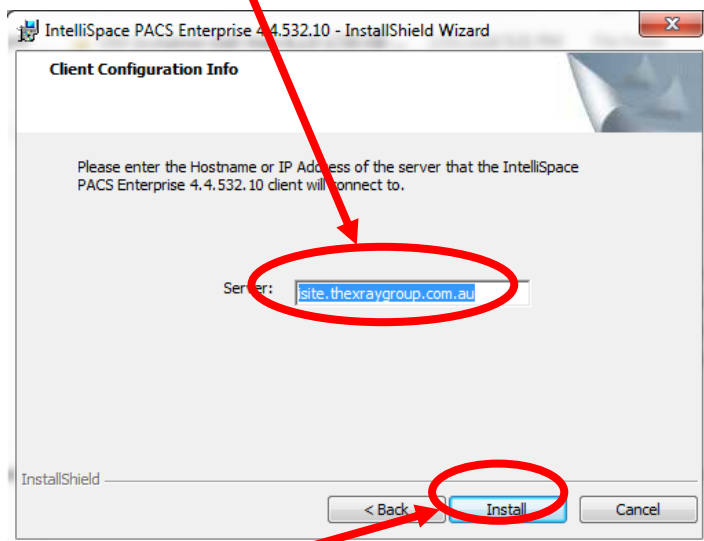
Click Next:



Click Install:

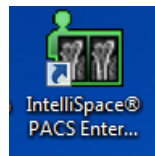
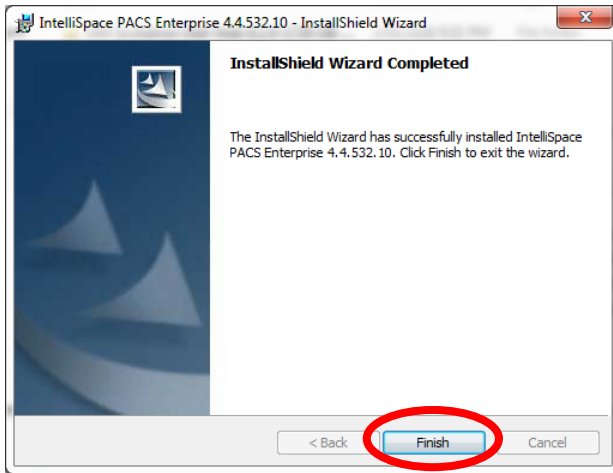


Type "site.thexraygroup.com.au" (without the quotes) in the server field:



Then click Install

Click "Finish" to end the installation:



You will now find a new icon on your desktop:

Or in the Start Menu in "All Programs", "Phillips Medical", "IntelliSpace PACS Enterprise"

The login screen will look like this make sure you select xrs.local in "log on to" field and Referring Practitioner in "Location" field.

